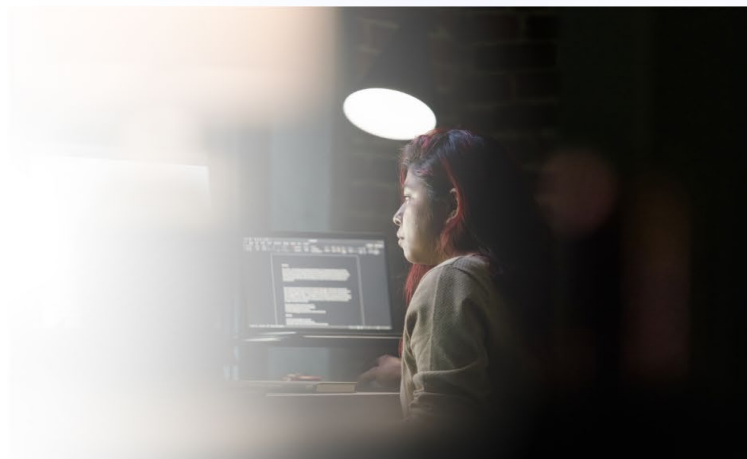


# How to Protect Yourself Against THE DARK WEB

From



The internet can be broken down into three layers: 1. surface web 2. deep web 3. dark web.

Content on the **surface web** is easily accessible from everyday websites and browsers and makes up only 5% of all content available on the internet. The **deep web** is home to private and secure portals, like your bank and healthcare accounts, and represents 90% of all internet content.

The **dark web** is the #1 marketplace where stolen identities are bought and traded. The dark web consists of websites that hide their IP addresses and are not accessible from standard internet browsers.

**Dark web monitoring** is the search for and surveillance of personal information on the part of the web that isn't normally accessible. This type of monitoring isn't something you can easily do yourself, as the dark web requires a particular web browser—it's hidden from the search engines you would typically use. No organization, business, or government oversees the dark web or can enforce rules, which is why it is commonly associated with illegal activities.

You can protect your identity by enrolling in an identity theft protection plan that monitors your personally identifiable information (PII) across the internet, including the dark web. If you are enrolled in IDShield, remember to add your personally identifiable information for monitoring! If a threat is detected, you will receive an alert.

If you have any questions about an alert you've received or concerns due to a recent data breach, you can call to speak to an IDShield identity theft specialist. If you do not have IDShield, consider enrolling at your next opportunity.

Pre-Paid Legal Services, Inc. ("PPLSI") provides access to identity theft protection and restoration services through its product IDShield. IDShield plans are available at individual or family rates. A family plan provides monitoring services for eligible dependent children under the age of 18 of the Named Member or Named Member's spouse or domestic partner. Consultation and Restoration Services are available for eligible dependent children under the age of 26. For complete terms, coverage, and conditions, please see an identity theft plan. All Licensed Private Investigators are licensed in the state of Oklahoma. An Identity Fraud Protection Plan ("Plan") is issued through a nationally recognized carrier. PPLSI is not an insurance carrier. This covers certain identity fraud expenses and legal costs as a result of a covered identity fraud event. See a Plan for complete terms, coverage, conditions, limitations, and family members who are eligible under the Plan.